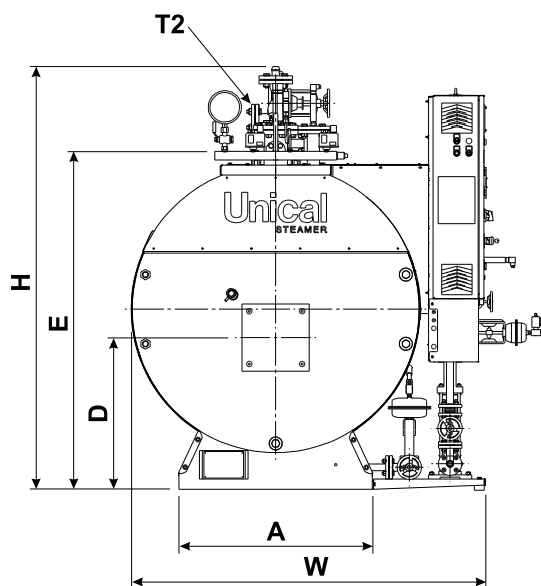
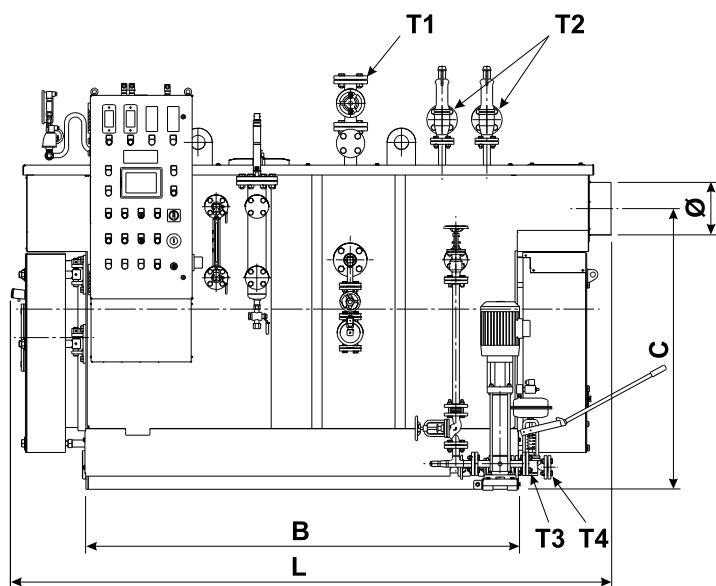


BAHR'12 STD - EC - HP - HPEC - HPO - HPOEC



- T1 Steam inlet
- T2 Safety valve drain
- T3 Water supply
- T4 Boiler drain

Technical features

| BAHR' 12 | W | L | H | A | B | C | D | E | Ø | T1 | T2 | T3 | T4 | Weight empty kg | Weight in oper. kg |
|----------|------|------|------|------|------|------|------|------|-----|-------|------|------|------|--------------------|-----------------------|
| Model | mm | mm | mm | mm | mm | mm | mm | mm | mm | | | | | | |
| 300 | 1474 | 2340 | 1820 | 780 | 1550 | 1167 | 635 | 1333 | 219 | DN32 | DN40 | DN25 | DN25 | 1650 | 2175 |
| 400 | 1474 | 2340 | 1820 | 780 | 1550 | 1167 | 635 | 1333 | 219 | DN32 | DN40 | DN25 | DN25 | 1650 | 2175 |
| 500 | 1861 | 2565 | 1940 | 860 | 1750 | 1266 | 685 | 1453 | 219 | DN40 | DN40 | DN25 | DN25 | 2040 | 2800 |
| 600 | 1861 | 2565 | 1940 | 860 | 1750 | 1266 | 685 | 1453 | 219 | DN40 | DN40 | DN25 | DN25 | 2040 | 2800 |
| 800 | 1996 | 2950 | 2077 | 950 | 2120 | 1349 | 745 | 1593 | 258 | DN50 | DN40 | DN25 | DN25 | 2860 | 3940 |
| 1000 | 1996 | 2950 | 2077 | 950 | 2120 | 1379 | 745 | 1593 | 258 | DN50 | DN40 | DN25 | DN25 | 2860 | 3940 |
| 1250 | 2126 | 3414 | 2294 | 1090 | 2526 | 1555 | 860 | 1783 | 308 | DN65 | DN40 | DN25 | DN25 | 3750 | 5305 |
| 1500 | 2126 | 3414 | 2294 | 1090 | 2526 | 1555 | 860 | 1783 | 308 | DN65 | DN40 | DN25 | DN25 | 3750 | 5305 |
| 1750 | 2246 | 3543 | 2422 | 200 | 2750 | 1685 | 905 | 1918 | 358 | DN65 | DN40 | DN25 | DN40 | 4650 | 6655 |
| 2000 | 2246 | 3543 | 2422 | 1200 | 2750 | 1685 | 905 | 1918 | 358 | DN65 | DN40 | DN25 | DN40 | 4650 | 6655 |
| 2500 | 2296 | 3860 | 2774 | 1470 | 2830 | 2004 | 1080 | 2243 | 408 | DN80 | DN40 | DN32 | DN40 | 6600 | 9490 |
| 3000 | 2296 | 3860 | 2774 | 1470 | 2830 | 2004 | 1080 | 2243 | 408 | DN80 | DN40 | DN32 | DN40 | 6600 | 9490 |
| 4000 | 2756 | 4360 | 3031 | 1700 | 3300 | 2187 | 1170 | 2473 | 458 | DN100 | DN40 | DN32 | DN40 | 9030 | 13185 |
| 5000 | 2856 | 4943 | 3173 | 1800 | 3800 | 2261 | 1195 | 2548 | 488 | DN125 | DN50 | DN32 | DN40 | 10590 | 16390 |
| 6000 | 3026 | 5236 | 3315 | 1850 | 4003 | 2326 | 1210 | 2618 | 488 | DN150 | DN50 | DN40 | DN40 | 11800 | 18560 |

2.5 - OPERATING DATA

| Data project | U of M | BAHR '12 Model | | | | | | | | | | | | | | |
|---|--------|----------------|-------|-------|-------|-------|-------|-------|-------|-------|-------|-------|-------|-------|-------|-------|
| | | 300 | 400 | 500 | 600 | 800 | 1000 | 1250 | 1500 | 1750 | 2000 | 2500 | 3000 | 4000 | 5000 | 6000 |
| Useful power * | kW | 204 | 273 | 341 | 409 | 560 | 700 | 852 | 1022 | 1193 | 1363 | 1704 | 2045 | 2726 | 3408 | 4089 |
| Thermal output | kW | 234 | 314 | 392 | 470 | 644 | 805 | 979 | 1175 | 1371 | 1567 | 1926 | 2310 | 3133 | 3917 | 4700 |
| Steam production | kg / h | 300 | 400 | 500 | 600 | 800 | 1000 | 1250 | 1500 | 1750 | 2000 | 2500 | 3000 | 4000 | 5000 | 6000 |
| Max pressure allowable PS | bar | 12 | 12 | 12 | 12 | 12 | 12 | 12 | 12 | 12 | 12 | 12 | 12 | 12 | 12 | 12 |
| Max. Temperature allowable TS | °C | 191,7 | 191,7 | 191,7 | 191,7 | 191,7 | 191,7 | 191,7 | 191,7 | 191,7 | 191,7 | 191,7 | 191,7 | 191,7 | 191,7 | 191,7 |
| Max. Temperature working TE | °C | 191,7 | 191,7 | 191,7 | 191,7 | 191,7 | 191,7 | 191,7 | 191,7 | 191,7 | 191,7 | 191,7 | 191,7 | 191,7 | 191,7 | 191,7 |
| Volume V | L | 730 | 730 | 1030 | 1030 | 1500 | 1500 | 2195 | 2195 | 2810 | 2810 | 3950 | 3950 | 5780 | 7730 | 8600 |
| Water content at level | L | 540 | 540 | 820 | 820 | 1080 | 1080 | 1555 | 1555 | 2005 | 2005 | 2890 | 2890 | 4155 | 5800 | 6760 |
| Volume CC | m3 | 0,26 | 0,26 | 0,36 | 0,36 | 0,67 | 0,67 | 0,95 | 0,95 | 1,29 | 1,29 | 1,86 | 1,86 | 2,76 | 3,48 | 3,99 |
| Thermal Load volumetric | MW/m3 | 0,905 | 1,212 | 1,076 | 1,290 | 1,022 | 1,279 | 1,036 | 1,242 | 1,066 | 1,218 | 1,051 | 1,261 | 1,129 | 1,125 | 1,178 |
| Total area | m2 | 6,5 | 6,5 | 10,0 | 10,0 | 16,1 | 16,1 | 24,0 | 24,0 | 32,4 | 32,4 | 49,9 | 49,9 | 69,0 | 85,7 | 97 |
| Thermal Load surface | kW/m2 | 31,4 | 42,0 | 34,1 | 40,9 | 33,9 | 42,4 | 35,5 | 42,6 | 36,8 | 42,1 | 34,1 | 41,0 | 39,5 | 39,8 | 42,2 |
| Dp smoke side | mbar | 2,2 | 2,6 | 2,8 | 3,5 | 3,8 | 4,2 | 4,5 | 5,1 | 5,5 | 6,0 | 6,8 | 7,0 | 8,0 | 8,8 | 8,8 |
| Burner connection | Ø mm | 210 | 210 | 240 | 240 | 240 | 240 | 280 | 280 | 280 | 280 | 360 | 360 | 400 | 400 | 420 |
| Minimum length burner head | mm | 340 | 340 | 340 | 340 | 340 | 340 | 370 | 370 | 370 | 370 | 370 | 370 | 370 | 370 | 370 |
| Absorption max power (excluding burner) | W | 1,85 | 2,2 | 2,2 | 2,2 | 2,2 | 2,2 | 2,2 | 2,2 | 2,2 | 2,2 | 3,0 | 3,0 | 3,7 | 4,0 | 5,5 |
| Pressure of compressed air supply | bar | 4 - 6 | 4 - 6 | 4 - 6 | 4 - 6 | 4 - 6 | 4 - 6 | 4 - 6 | 4 - 6 | 4 - 6 | 4 - 6 | 4 - 6 | 4 - 6 | 4 - 6 | 4 - 6 | 4 - 6 |